

THE SPACE EXPLORER

THE NEWSLETTER OF THE ASSOCIATION OF SPACE EXPLORERS • USA January 2000

Romania Hosts 15th Congress Spain, Kazakhstan to host 16th, 17th Congresses

Twenty-five astronauts and cosmonauts from eleven countries gathered in Bucharest, Romania, October 3-10, 1999 for the 15th Annual Planetary Congress of the Association of Space Explorers. Hosted by Romanian cosmonaut Dumitru Prunariu, the theme of the 15th Congress was "Space and Astronomy-Toward the New Millennium".

The Opening Ceremony of the Congress was held Monday morning at the Parliament Palace in central Bucharest. In addition to the fliers, members of the local press and representatives of Romania's scientific community, the ceremony was attended by Romanian President Emil Constantinescu and US Ambassador to Romania James Rosapepe. Ro-

see Congress, pg. 6

Hauck, Reightler Elected to ASE-USA Board of Directors

With 72% of ASE-USA members voting, Rick Hauck and Ken Reightler, Jr. were elected to serve three-year terms and Charlie Walker was re-elected to a second term on the US chapter's governing body. At the first meeting of the new board, Bo Bobko was elected to serve as President, Owen Garriott was appointed Treasurer, and Charlie Precourt was re-elected to the position of Vice-President.

ASE-USA Launches Internet Web Site

The Association of Space Explorers-USA, on behalf of the international Association, recently established an ASE presence on the world-wide web. The web site was designed and produced by ASE-USA executive director Andy Turnage in cooperation with ASE-USA member Millie

Hughes-Fulford and it replaces the original ASE web site hosted on the CSC server.

The new site provides a comprehensive overview of the Association, its history, activities, goals and objectives and membership; it

see Internet, pg. 9

INSIDE

President's Report2
Boeing ASE's Newest Corporate Member3
ASE-USA Membership Roster5
16th Congress Program7
ASE Web Site Map8
2000 Flight Anniversaries9

President's Report by Bo Bobko

I am pleased to report that ASE-USA's financial situation has improved significantly over the past year and we are now several steps back from the brink. For the second year in a row, our operating income exceeded our expenses; in the most recent fiscal year, by more than \$10,000. This, in large part, is due to the fact that most of our outstanding member loans were forgiven, contributions were made to the endowment fund, we were able to generate some life memberships and corporate memberships were at an all time high. These four items added to the net worth of the association, providing us with a bit of a cushion (a year ago we were worried about the Association becoming insolvent); we now have financial reserves equivalent to about a year of operations.

The challenge for the current fiscal year (July 1, 1999 to June 30, 2000) will be to add to both our operating income and increase our net worth. Both of these need to be increased to enable the Association to add value to the challenge of promoting space exploration and of contributing to our members' professional growth. This will prove more difficult in the coming year, as it will be more difficult to obtain the equivalent of the loans that were forgiven and the mem-

ber contributions to the ASE Endowment Fund. You can help us by becoming a Life Member of ASE-USA (if you are not already) or making a tax-deductible cash contribution to the Endowment Fund. These endowment funds are not used for ASE-USA operations, but are invested in growth-oriented mutual funds to guarantee the long-term financial security of the organization. In its first year, the endowment fund has grown to a value of nearly \$50,000!

The chart on page 6 graphically illustrates the financial performance of the Association over the past five fiscal years. You will see that in 1995, we had a significant loss; this was due primarily to the fact that in moving the office from San Francisco (in 1994), we lost continuity with some of our funding sources, we payed retirement/severance to our previous executive director, and we were still paying for the equivalent of 1.5 full-time staff members.

Fiscal year 1996 showed a net profit with a decrease to one part-time staff member. Fiscal year 1997 again showed a loss with significant costs to ASE-USA for the XII Congress in Canada. In fiscal year 1998 we saw a significant drop in expenses, despite expenses for

see Report, pg. 6

BOARD OF DIRECTORS

President
KAROL J. BOBKO
 Booz, Allen & Hamilton
 STS 6, STS 51D, STS 51J

Vice-President
CHARLES J. PRECOURT
 Johnson Space Center
 STS 55, STS 71, STS 84, STS 91

Treasurer
OWEN K. GARRIOTT
 SKYLAB II, STS 9

JOHN M. FABIAN
 STS 7, STS 51G

RICHARD J. HIEB
 Orbital Sciences Corporation
 STS 39, STS 49, STS 65

FREDERICK H. HAUCK
 AXA Space
 STS 7, STS 51, STS 26

WILLIAM F. READDY
 NASA HQ
 STS 42, STS 51, STS 79

KENNETH S. REIGHTLER, JR.
 Lockheed Martin Space Operations
 STS 48, STS 80

CHARLES D. WALKER
 The Boeing Company
 STS 41D, STS 51D, STS 61B

Executive Director
ANDY TURNAGE

The SPACEEXPLORER
est. 1985

The SPACEexplorer is published by the Association of Space Explorers-USA, a nonprofit, tax-exempt 501(c)3 organization.

Please send all correspondence to:
ASE-USA
 1150 Gemini Ave.
 Houston, TX 77058

TIMELINE EXHIBIT at SPACE CENTER HOUSTON

Space Center Houston, the official visitors center for NASA's Johnson Space Center, is currently developing a permanent timeline exhibit to highlight the Mercury, Gemini, and Apollo programs and pay tribute to the astronauts who flew as part of those historic missions. It is scheduled to open in late 1999.

The exhibit will be a three-dimensional montage of images and artifacts to augment the experience of visitors to the awe inspiring "Starship Gallery." To help visitors understand—and remember—the world and our nation as they were during the most inspirational years of human space exploration, the exhibit will also include images of current events from 1961 through 1972.

Eventually the exhibit will be expanded to include the Apollo-ASTP, Skylab, and Shuttle programs through the present. These sections will also incorporate large images and artifacts, and will feature a design approach that enhances the different character of each program.

Astronauts and Cosmonauts from around the world are invited to participate by loaning artifacts to Space Center Houston from their collections related to their involvement in the space program for inclusion in the exhibit.

To find out more about the exhibit or how to participate, please contact the Space Center Houston Exhibits Department at 281-244-2128 or carminam@spacecenter.org.

ASE-USA Welcomes New Corporate Member The Boeing Company

ASE-USA welcomes Boeing North America, Inc. as its newest Corporate Member. The Boeing Company, after its merger in 1997 with McDonnell Douglas and acquisition in 1996 of the defense and space units of Rockwell International, became the largest aerospace company in the world. Its history mirrors the history of aviation. Boeing is the world's largest manufacturer of commercial jetliners, military aircraft and the nation's largest NASA contractor. As NASA's leading contractor, the company's future is linked to space flight and exploration, and to increasing commercial applications in space.

Boeing leads the U.S. industry team for the International Space Station. With 16 nations working cooperatively toward its success, the Space Station is the largest international science and technology venture in history. Boeing also built the Space Shuttle orbiters and their main engines, prepares the Shuttle's payloads, and performs integration for the overall Shuttle fleet.

*Congress
cont'd from page 1*

manian cosmonaut Dumitru Prunariu opened the session by welcoming the assembled fliers to Romania and introducing the members of the executive committee and President Constantinescu, who greeted the assembled fliers and discoursed on the benefits derived from space exploration and technology; he also expressed his belief that these benefits should be available not only to post-industrialized countries, but also to all developing countries.

ASE Co-President Alexei Leonov, speaking on behalf of the delegations, welcomed the fliers and attending dignitaries and gave a brief overview of ASE Congresses and the role of ASE members as ambassadors of space exploration. Executive Committee members Charlie Walker, Mirosław Hermaszewski, Gennadi Strelakov and Viktor Savinykh then each addressed the session with brief remarks about the Association and its role in promoting international cooperation in space.

Following these remarks, the Executive Committee presented President Constantinescu with a Leonov Medallion in recognition of his personal efforts in support of the 15th Congress. Following the ceremony, the delega-

tions toured the Parliament Palace and gathered for the official Congress group photo. Prior to departing for lunch, a press conference was held to announce the opening of the Congress and to discuss the theme of the Congress.

After lunch at the Casino Palace restaurant, a member session was held and given the lack of substantial technical presentations scheduled for the congress, a lively discussion was conducted about the future of the Association and the need for members to participate in and contribute to the technical content of the Congresses. Gordon Fullerton, in the first of two presentations, gave an update on the X-38 flight test program. That evening, the fliers and spouses were invited to a reception hosted by US Ambassador to Romania James Rosapepe.

Tuesday was Community Day. In the morning, the fliers were organized into groups which visited multiple venues throughout Bucharest. Sites included the Polytechnic University of Bucharest, the Jean Monet College, the Media Pro printing house, Adevarul newspaper, Radio Total, and the Tuborg Beer Factory. Several fliers participated in a live internet discussion with Swedish students from the world trade center.

That afternoon, another short member session was held and

Gordon Fullerton gave the second part of his presentation, this time on his experimental flight test program onboard the Russian TU-144 supersonic transport aircraft. Tokhtar Aubakirov also gave a brief presentation on his plans for the 17th Congress (2001), which will be held in Kazakhstan, will commemorate the 40th anniversary of the flight of Yuri Gagarin. In the evening, the delegations attended a fashion show and reception at the Elisabeta Palace.

Wednesday morning, the theme session of the congress was held at the Bucharest University. The session began with a review by Dorin Prunariu of the UN Declaration on Space Week, promulgated at the UNISPACE III conference in Vienna, Austria. Marius-Ioan Piso, executive director of the Romanian Space Agency, followed with a discussion on the history of the Romanian Space Agency and its various partnership with international agencies. Marie-Jose Deutsch of the Jet Propulsion Laboratory gave a detailed presentation of NASA Great Observatories program; Dumitru Hasegan of the Romanian Institute of Space Science provided a glimpse of Romanian space science activities and Magdalena Stavinschi of the Astronomical Institute of the

see Congress, pg. 6

ASE-USA Member Roster

*Loren Acton
 James Adamson
 *Buzz Aldrin
 *Joseph Allen
 Andrew Allen
 Jerome Apt
 *James Bagian
 *Michael Baker
 *Daniel Barry
 *John-David Bartoe
 John Blaha
 *Karol Bobko
 Ken Bowersox
 Vance Brand
 Daniel Brandenstein
 *Roy Bridges, Jr.
 Mark Brown
 Curtis Brown, Jr.
 James Buchli
 Robert Cabana
 Kenneth Cameron
 *Scott Carpenter
 Gerald Carr
 Manley Carter †
 *Robert Cenker
 *Eugene Cernan
 *Mary Cleave
 Michael Clifford
 *Michael Coats
 Kenneth Cockrell
 Michael Collins
 Charles Conrad, Jr. †
 *Richard Covey
 John Creighton
 *Robert Crippen
 *Roger Crouch
 Walter Cunningham
 Nancy Currie
 Jan Davis
 *Charles Duke, Jr.
 *Bonnie Dunbar
 Samuel Durrance
 *John Fabian
 *Martin Fettman

Gordon Fullerton
 F. Andrew Gaffney
 Guy Gardner
 *Jake Garn
 *Owen Garriott
 Edward Gibson
 Linda Godwin
 Frederick Gregory
 Terry Hart
 *Henry Hartsfield, Jr.
 *Frederick Hauck
 *Susan Helms
 Terence Henricks
 *Richard Hieb
 *Kathryn Hire
 *Jeffrey Hoffman
 Millie Hughes-Fulford
 James Irwin †
 Brent Jett, Jr.
 Susan Kilrain
 *Fred Leslie
 Byron Lichtenberg
 Don Lind
 Gregory Linteris
 Michael Lopez-Alegria
 John Michael Lounge
 *Jack Lousma
 James Lovell, Jr.
 G. David Low
 William McArthur, Jr.
 *Jon McBride
 Bruce McCandless II
 Michael McCulley
 Donald McMonagle
 *Carl Meade
 Bruce Melnick
 *Edgar Mitchell
 *Mike Mullane
 Steven Nagel
 Bill Nelson
 George Nelson
 James Newman
 Bryan O'Connor
 *Ellen Ochoa

Stephen Oswald
 Robert Overmyer †
 William Pailles
 Scott Parazynski
 *Ronald Parise
 *Gary Payton
 *Donald Peterson
 William Pogue
 Charles Precourt
 William Readdy
 *Kenneth Reightler, Jr.
 Richard Richards
 Kent Rominger
 Stu Roosa †
 *Jerry Ross
 *Mario Runco, Jr.
 *Albert Sacco, Jr.
 Harrison Schmitt
 Russell Schweickart
 *Richard Searfoss
 *Ronald Sega
 Brewster Shaw, Jr.
 Loren Shriver
 Steven Smith
 Sherwood Spring
 Robert Springer
 *Thomas Stafford
 Kathryn Sullivan
 Joseph Tanner
 Norman Thagard
 Donald Thomas
 *Pierre Thuot
 *Richard Truly
 *James van Hoften
 Lacy Veach †
 James Voss
 *Janice Voss
 *Charles Walker
 *David Walker
 Mary Ellen Weber
 *Donald Williams
 Alfred Worden

* Life Members
 † deceased

Congress

cont'd from pg. 4

Romanian Academy of Sciences presented the observations of the Institute of the total solar eclipse of August 11.

A lunch reception was held at the Russian Embassy after which the fliers returned to the hotel for the traditional poster signing session. That evening, the delegations traveled to the Cotreceni Palace for a performance of the Romanian Philharmonic Orchestra and a reception hosted by the National Security Advisor to the President Dorin Marian. Included in the evening's program was a brief ceremony where the ASE annual planetary award, the Crystal Helmet, was awarded to Academician Virgiliu N. Constantinescu.

Thursday morning the delegations departed Bucharest for Sinaia, where they visited Peles Castle and made a brief stop to visit with attendees to the 1999 International Seminar on Microelectronics. Continuing on to Brasov, the fliers and spouses took an afternoon walking tour of the city and enjoyed some free time before participating in the Closing Ceremony at the Aro Palace restaurant that evening.

Friday began with a visit to

see Congress, pg. 9

Report

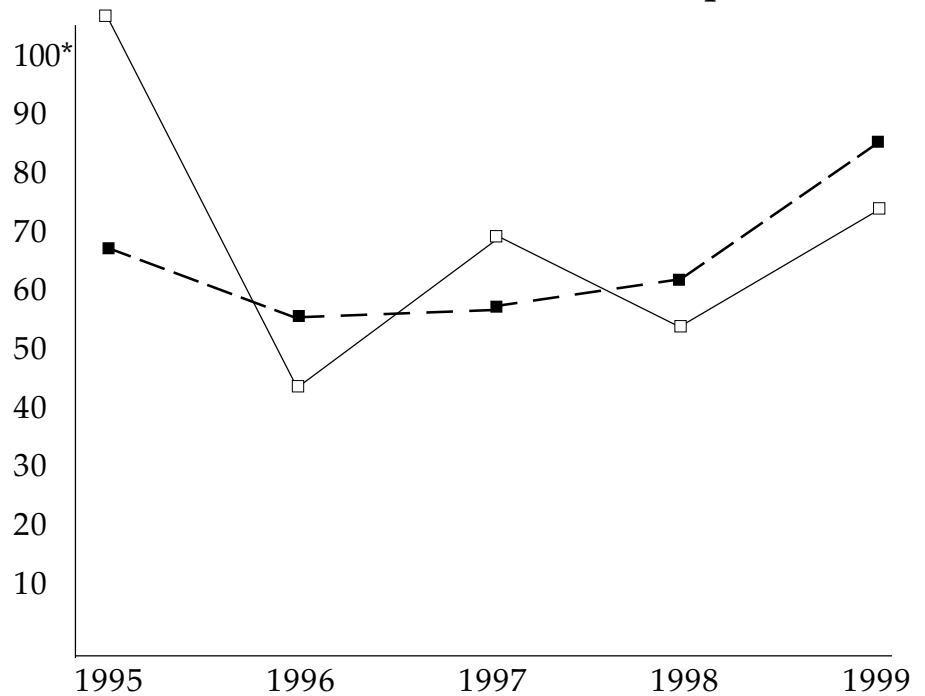
cont'd from pg. 2

the move to Houston. In fiscal year 1999, expenses rose again with our one staff member going to full-time and the costs associated with administration and sales.

For fiscal year 2000, we project a slight profit with rather conservative income assumptions – I am confident that we will do better than these projections. Our biggest sources of income this year will be corporate memberships and business activities such as our arrangement with Starport.com, astronaut appearances, and increased ASE memorabilia sales.

All in all, this coming year has a much better financial outlook than what we had two years ago. We intend to continue be aggressive in seeking out funding sources, and we are committed to not only increasing, but adding value to membership, both individual and corporate, in ASE-USA. Much of ASE-USA's potential as a solid professional association is dependent on our personal willingness to participate, not only financially, but with our time and energy; I would encourage you to contact the ASE-USA office to discuss how you can help. On behalf of all of the members of the Board of Directors, I thank you all for your continuing support!

Five Year Look-Back (income/expenses)



* in thousands of dollars

Income — — — — —
 Expenses — — — — —

**ASE 16th Planetary Congress
Madrid, Spain
October, 2000**

Preliminary Program

Monday	0900	Breakfast
	1000-1130	Opening Ceremony (order of speakers TBD) Remarks by the King Welcome by the Host (Duque) Remarks by ASE President Other speakers (Goldin, Rodota, Lopez-Alegria)
	1200-1300	Press Conference
	1400-1600	Lunch
	1630-1930	Technical Session # 1 (Open) ISS (#1)-US Assembly Flights, FGB/SM, Increment Plans
	2130-2300	Dinner
Tuesday	0900-1000	Breakfast
	1000-1300	Technical Session # 2 (Open) ISS (#2)-Partner Contributions
	1400-1600	Lunch
	1630-1930	Technical Session # 3 (Closed) Crew Safety & Technical Issues
	2130-2300	Dinner
Wednesday	0900-1000	Breakfast
	1000-1300	Technical Session # 4 (Open) Mir Space Station- Whence, Wither?
	1400-1600	Lunch
	1630-1900	Executive Session (Closed)
	1900-2030	Poster Signing
	2130-2300	Dinner
Thursday	0800-0900	Breakfast
	0900-1300	Depart for Valencia or Isla de Palmas
	1400-1600	Lunch
	1630-1930	Technical Session # 5 (Open) Commercialization and Globalization
	2130-2300	Dinner
Friday	0900-1000	Breakfast
	1000-1300	Technical Session # 6 (Open) -Future Projects
	1400-1600	Lunch
	2130-2300	Closing Banquet and Award Ceremony
Saturday	Depart from Valencia/Palmas	

Site Map

<http://www.space-explorers.org>

The Association

Organizational
Overview

ASE History
ASE Charter
Executive Summary
Goals & Objectives

ASE Members

Membership Rosters

International
United States
Russia

-Bios

Planetary Congress

Congress Overview

Links to _____

-Congress Reports
-Congress Photos
-Attendees
-Member Registration

Boards & Committees

USA Board of Directors
Russia Board of Directors
Executive Committee
International Committee Rosters

-USA staff
-Russia Staff

Activities

Committee Activities

Crew Safety
Education
Ecology

-Crew safety related publications
-Spaceflight resources
-Madagascar, volcanoes and sunrise/sunsets from space

Outreach

External Relations & Projects
Appearances

Publications

Newsletters
Congress Proceedings
Annual Reports

Upcoming Events

Congresses
TIMS

Collectibles

ASE Merchandise

Home Planet Collector's Edition
Congress Posters
Congress Covers
ASE Logo Shirts

Corporate Members

Links to Corporate Member web sites

Internet

cont'd from pg. 1

provides complete descriptions of the Association's annual Planetary Congresses, downloadable annual reports, Congress proceedings and newsletters, descriptions and results of the work of the ASE's international committees, biographical information on ASE members, flight chronologies, educational materials for teachers and students, marketing of ASE collectibles and memorabilia and links to ASE's corporate members.

ASE members are now encouraged to register for the annual planetary congresses on-line, as well as vote in annual elections and ad hoc referenda directly over the internet. In recent elections to the ASE-USA Board of Directors, over 50% of the members who voted used the ASE web site to submit their ballots.

Members are asked to bookmark and visit the site periodically for updates on upcoming ASE activities; for ongoing referenda, notices will be posted on the index (Home) page. Additionally, members are requested to provide biographical information (in electronic form), links to personal web sites and downloadable educational materials (flight results, video clips, Power Point presentations) for use in the Education Committee's web site Library.

ASE-USA Implements New Dues Policy

The Board of Directors has authorized a reduction in ASE-USA annual member dues, effective January 1, 2000. The policy modification was implemented in order to bring ASE-USA dues into conformity with "industry standards", and to reflect the reality that excessive member dues are, for some, an obstacle to joining the Association. There has been no change in Life Member dues.

ASE-USA dues will henceforth be **\$35** for active (flight status) astronauts, and **\$65** for former and retired fliers.

Congress

cont'd from pg. 6

the University of Brasov, where the fliers held a panel discussion with students, faculty and local dignitaries. The day continued with a visit to Bran Castle, home of the legendary Count Dracula and an evening folklore show and dinner in Poiana Brasov.

Friday evening, elections to the international executive committee were held and Charlie Walker was re-elected to a second term while Tokhtar Aubakirov and Patrick Baudry were elected to fill seats vacated by outgoing committee members Alexei Leonov and Ulf Merbold.

Flight Anniversaries 2000

5th

- STS 63
- STS 67
- Soyuz TM-21
- STS 71
- STS 70
- Soyuz TM-22
- STS 69
- STS 73
- STS 74

10th

- STS 32
- Soyuz TM-9
- STS 36
- STS 31
- Soyuz TM-10
- STS 41
- STS 38
- STS 35
- Soyuz TM-11

15th

- STS 51C
- STS 51D
- STS 51B
- Soyuz T-13
- STS 51G
- STS 51F
- STS 51I
- Soyuz T-14
- STS 51J
- STS 61A
- STS 61B

20th

- Soyuz 35
- Soyuz 36
- Soyuz T-2
- Soyuz 37
- Soyuz 38
- Soyuz T-3

25th

- Soyuz 17
- Soyuz 18a
- Soyuz 18
- Apollo-Soyuz

30th

- Apollo 13
- Soyuz 9

Association of Space Explorers-USA
1150 Gemini Ave.
Houston, TX 77058
ADDRESS CORRECTION REQUESTED

ASE-USA Corporate Members

**AlliedSignal
Technical Services**

Hastings' Chariots

SpaceVest

AXA Space

**Omega
International**

**Thiokol Propulsion
Group**

**The Boeing
Company**

Reed Brothers LP

**United Space
Alliance**

**Computer Sciences
Corporation**